

# Water Proof Circular Connectors

## 1108 series

- 1108 series connectors are built compact and the tight waterproofing mechanism allows the model to be at a depth 30 meters under water. This model is also ideal for application where units are exposed to extreme weather or high humidity either inside or outside.
- Also available for hermetically sealed receptacle.

### Specifications

Connections	Screw Coupling
Termination	Solder
Temperature and Humidity	-25°C to +85°C 85% Max.
Number of Pins	2, 3, 4, 5, 7, 8, 12, 14, 19, 21, 37
Shell Material / Finish	Brass / Nickel
Contact Material / Finish	Copper Alloy / Gold over Nickel
Water Proof (Connected State)	300kPa ( 3kgf/cm <sup>2</sup> )
Hermetic Seal (Hermetically sealed recep. only)	Helium leak rate 1 ATM. 1x10 <sup>-9</sup> cc/sec Max.

\* See next page as for Electrical Specifications.



Plug / Normal Clamp Type  
1108-12A10-7M( )



Plug / Double Clamp Type  
1108-12B10-7M( )



Jack / Normal Clamp Type  
1108-32A10-7M( )



Plug / Normal Clamp with Long Body Type  
1108-15A10-7M( )



Bulkhead Mount Receptacle  
1108-23A10-7F



Flange Mount Receptacle  
1108-21B10-7F



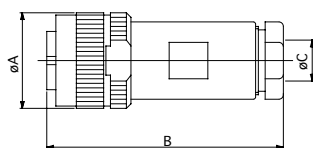
Hermetically Sealed Receptacle  
1108-71B10-7M



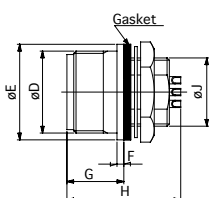
Back Mount Receptacle  
1108-29B10-7M-1



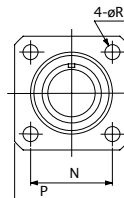
Caps for Plug and Receptacle  
1108-10PC1, 1108-10RC



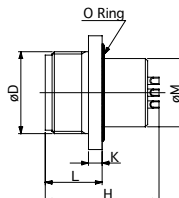
Plug / Normal Clamp Type



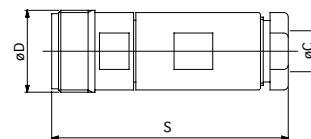
Bulkhead Mount Receptacle



Flange Mount Receptacle



Jack



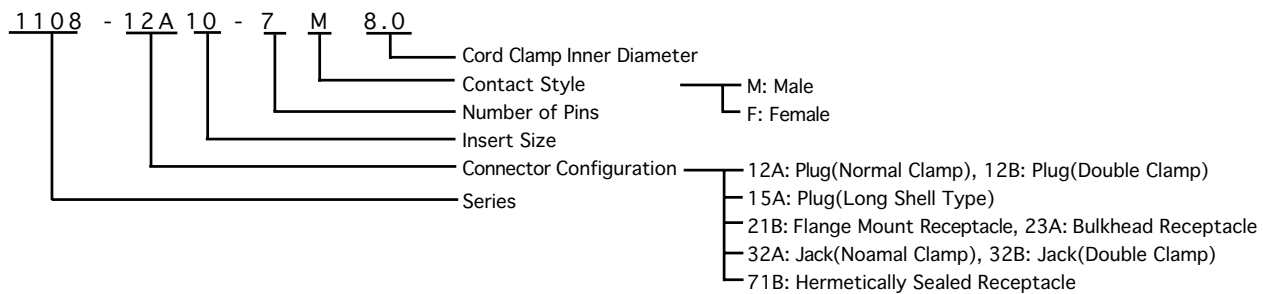
### Configuration

Insert size	No. of Pins	Dimensions (mm)															
		A	B	C	D	E	F	G	H	J	K	L	M	N	P	R	S
10	2, 3, 4 5, 7	21.0	52.0	5.0, 6.3, 7.0, 8.0 8.6, 9.3, 10.0, 10.5	M18 P=1	21.0	1.5	12.5	26.0	M15 P=1	3.0	12.5	15.0	18.0	25.0	3.2	52.0
16	8, 14	27.0	55.5	11.1, 11.8, 13.5	M24 P=1	27.0	1.5	12.5	26.0	21.0 P=1	3.0	12.5	21.0	23.0	30.0	3.2	56.0
20	12, 19	34.0	61.0	11.0, 14.3, 15.8	M30 P=1	33.0	2.0	13.5	26.0	26.0 P=1	3.0	12.5	26.0	31.0	38.0	3.2	61.0
26	21, 37	40.0	65.0	16.3	36.0 P=1	39.0	2.5	13.5	26.0	32.0 P=1	3.0	12.5	32.0	35.0	43.0	3.2	65.5

# Water Proof Circular Connectors Specifications

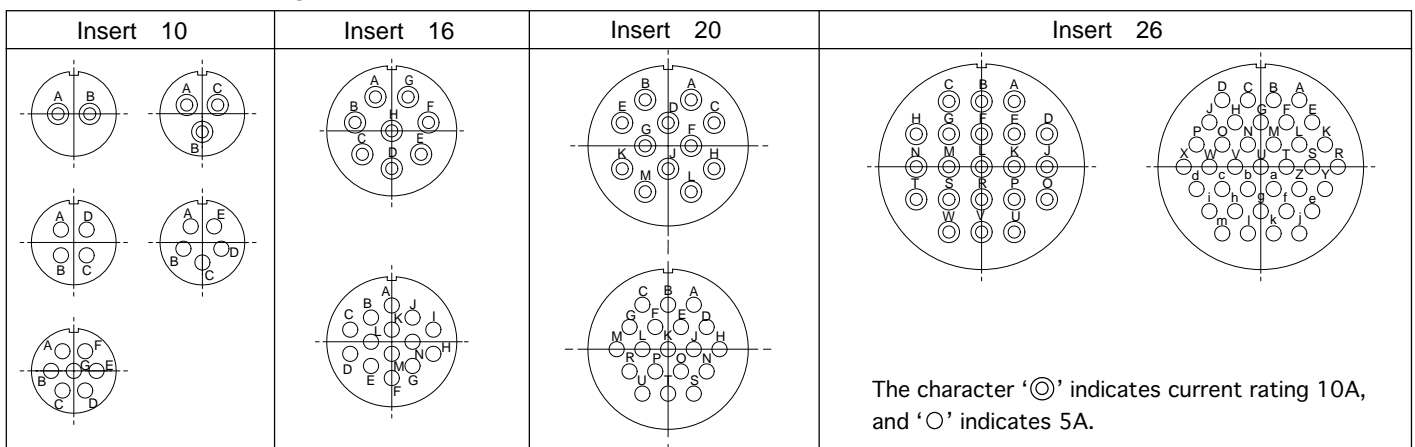
1108 series

## Part Numbering System



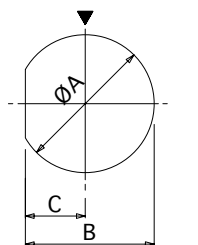
Insert Size	10					16		20		26	
Number of Contacts	2	3	4	5	7	8	14	12	19	21	37
Withstanding Voltage (V RMS)	1800	1000	1200	1000	900~1000	1200	1000	1200	1200	1200	1200
Voltage Rating (V RMS)	600	350	400	350	300~350	400	350	400	400	400	400
Current Rating (A)	10	10	5	5	5	10	5	10	4	10	3
Applicable Wire Size	16	16	20	20	20	16	20	16	20	16	20
Contact Resistance	5mΩ Max.										
Insulation Resistance	DC500V 1000MΩ~2000MΩ min.										

## Insert Size & Pin Arrangement

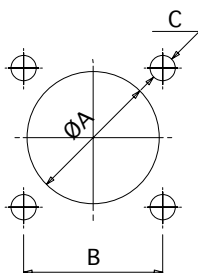


\* Drawings above are ones viewed from the rear side of pin insulators. (pin contacts)

## Mounting Hole Dimensions



Style 1



Style 2

### Bulkhead Mount Receptacle

Insert Size	Style	A	B	C
10	1	15.2	14.2	6.6
16		21.2	20.2	9.6
20		26.2	25.2	12.1
26		32.2	31.2	15.1

### Frangle Mount Receptacle

Insert Size	Style	A	B	C
10	2	15.2	18.0	M3
16		21.2	23.0	M3
20		26.2	31.0	M3
26		32.2	35.0	M3

### Hermetically Sealed Receptacle

Insert Size	Style	A	B	C
10	2	14.8	18.0	M3
16		21.8	25.0	M3